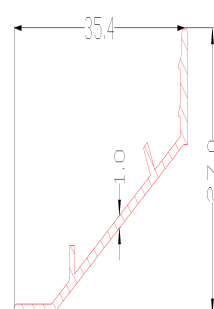
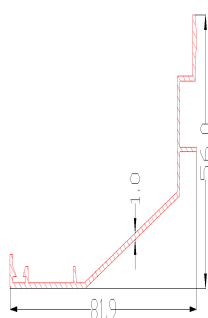
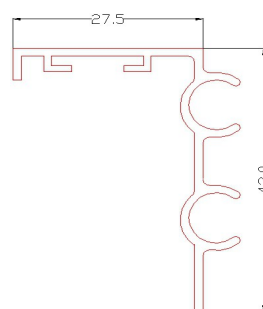


AliPro6000

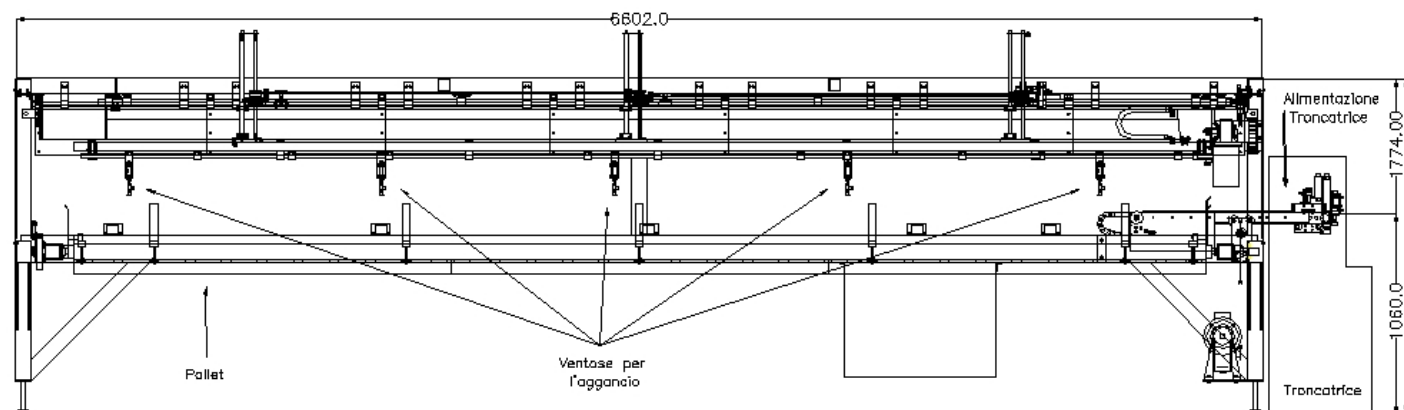
AUTOMATIC PROFILED BAR FEEDER



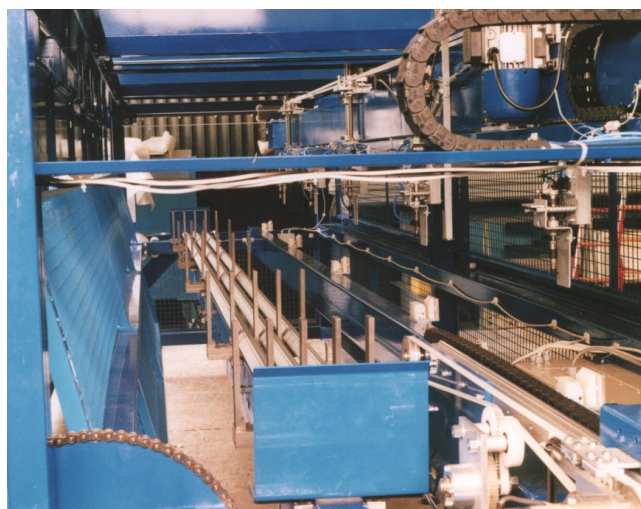
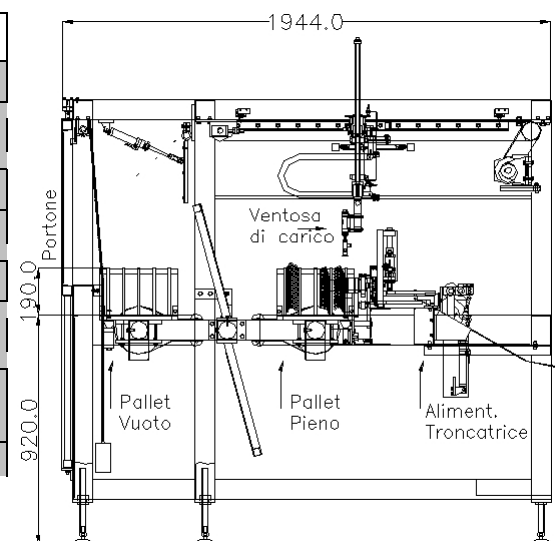
EXAMPLES OF MANAGED PROFILES



- ◆ Interlockings for miter saws and presses
- ◆ Management of any type of profile ensuring an unique orientation
- ◆ Optimization scraps according to the length of the piece
- ◆ High autonomy with pallet changer



TECNICAL SPECIFICATIONS	
FEEDING	380V - 50HZ
ABSORPTION	1 KW
WORKING TEMPERATURE	5 - 50°
WEIGHT	
PROTECTION	IP54
DIMENSIONS	1774 x 6600 x 1944 MM.
PRESSURE -	
AIR CONSUMPTION	6 BAR - 60NL/MIN
AUTONOMY	IT DEPENDS ON PROFILE



The system Alipro 6000 is able to feed continuously saws, presses and machine tools of any kind. Thanks to the coupling system with variable inclination is possible to feed asymmetric profiles that require a precise orientation within the machine tool. When the profile allows the profiles are stored vertically, in order to optimize the space occupied and maximizing the autonomy of the machine. In these photos have been uploaded aluminum profiles that require a 45 ° cut.

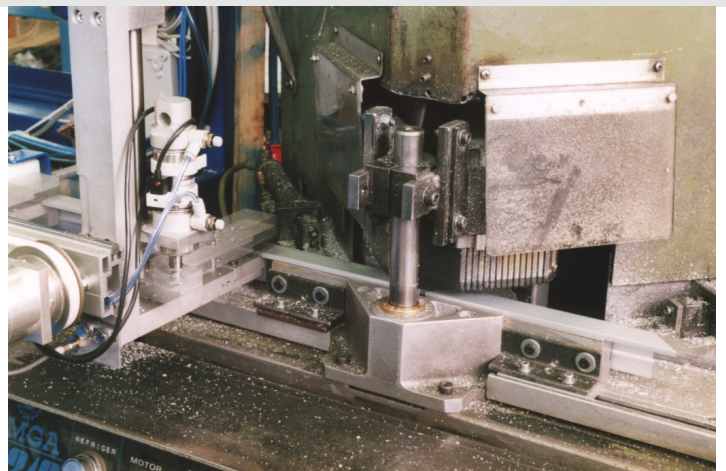
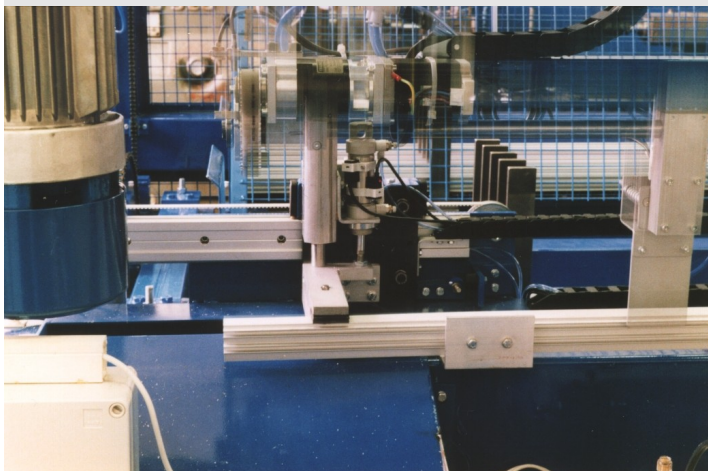
By setting the length of the pieces to be cut from the operator panel, Alipro 6000 automatically decides the number of cuts to be made to optimize any waste. Always using the operator panel, at any time you can have a ratio of the number of items produced and intervene to modify various parameters in order to optimize production.

The machine can be equipped with a pallet changer to allow loading without interrupting the normal operation. When cutting the last rod, the change is automatic pallet so that the finished cut, the power supply is ready to feed back the miter saw.



In these photos you can see the cycle of withdrawal of the bars:

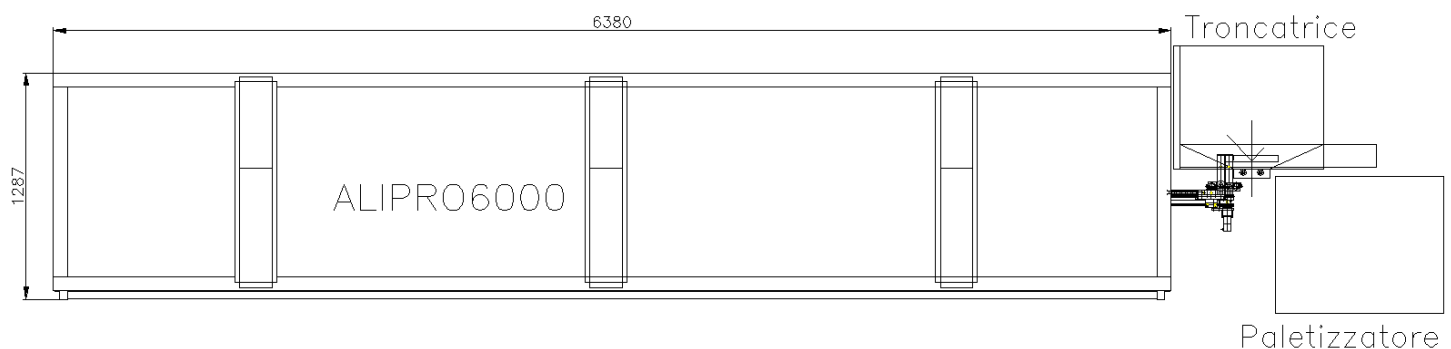
1. Removal of the bars from the pallet, the suction cups are inclined to take the side profile on the floor.
2. Profile is brought into the release position and oriented according to the type of cut to be made.
3. The rod is taken by the gripper and brought into position for the header and the subsequent cuts.
4. The cut piece is ejected from the cutting-off during the advancement of the profile for the next cut.



AUTOMATED CUTTING SYSTEMS

- ◆ **Complete systems of power, miter saw, palletizer**
- ◆ **A single supplier for the entire system**
- ◆ **Ability to create other processes such as drilling, punching and so on.**

The charger AliPro6000 can be provided combined with a cutter and a palletizing system so as to provide a shear center. With this solution, the customer is to have a single supplier that guarantees each component of the system and keep the interface. Given the high autonomy and productivity of the system, a palletizing system of the machined pieces, further reduces the use of staff for the plant management.





APIEL s.r.l.

Via Campanini, 1 - 43039 Salsomaggiore Terme (PR) - Italy

Tel. 0524/578918-574159 - **Fax** 0524/574159

E-mail: apiel@apiel.com - **Web Address:** <http://www.apiel.com>